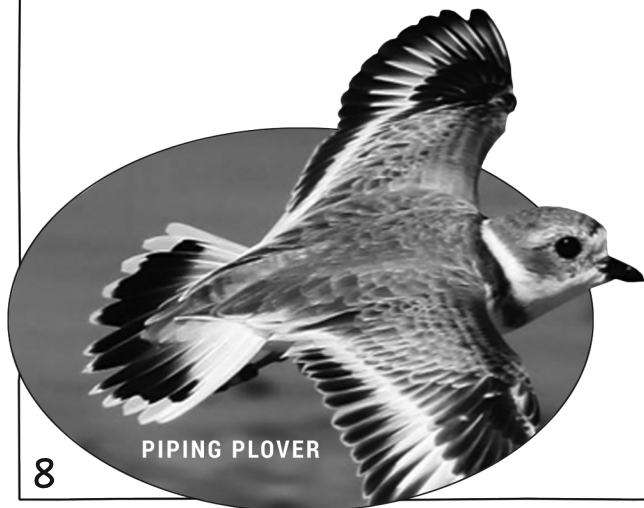
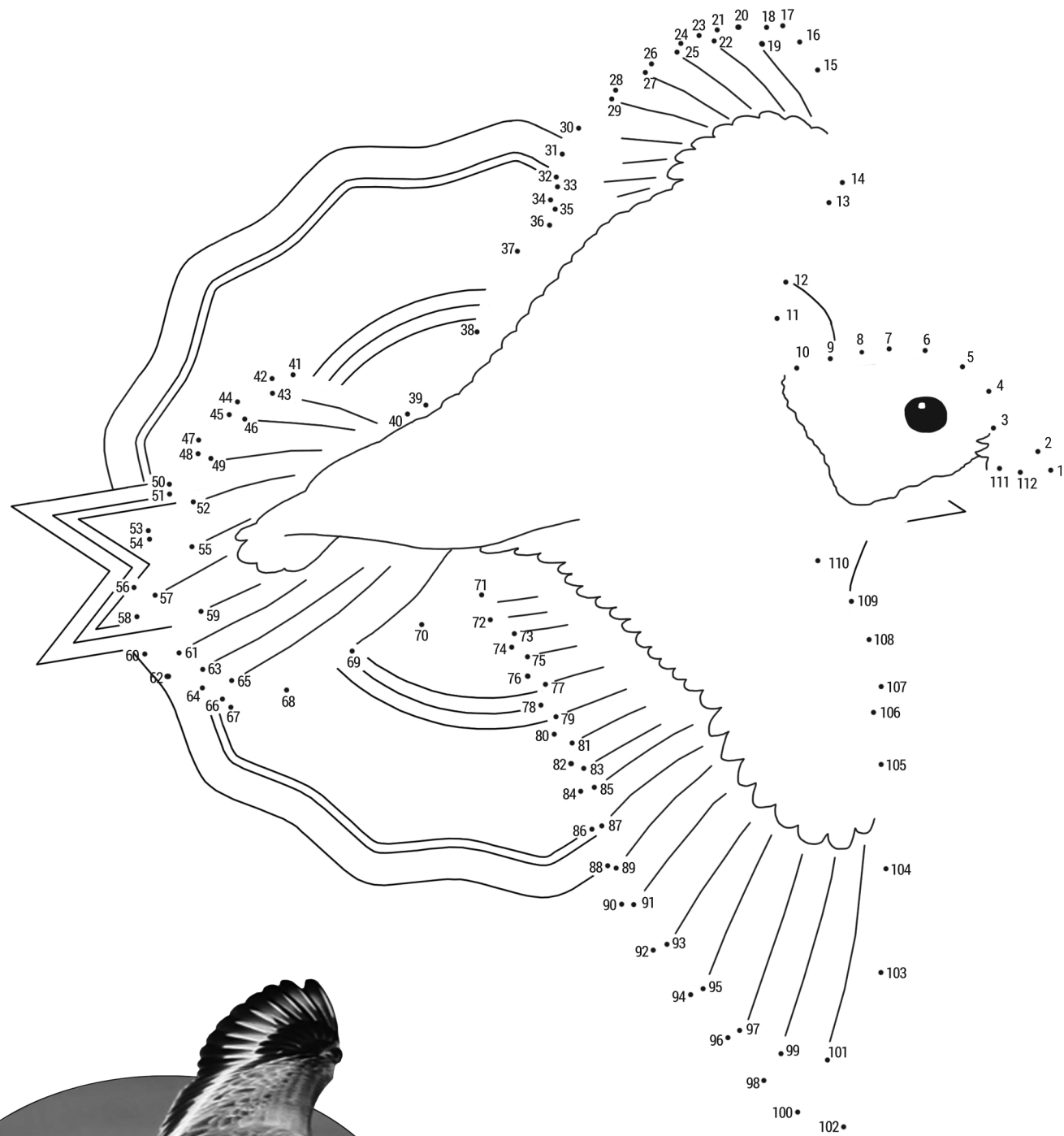


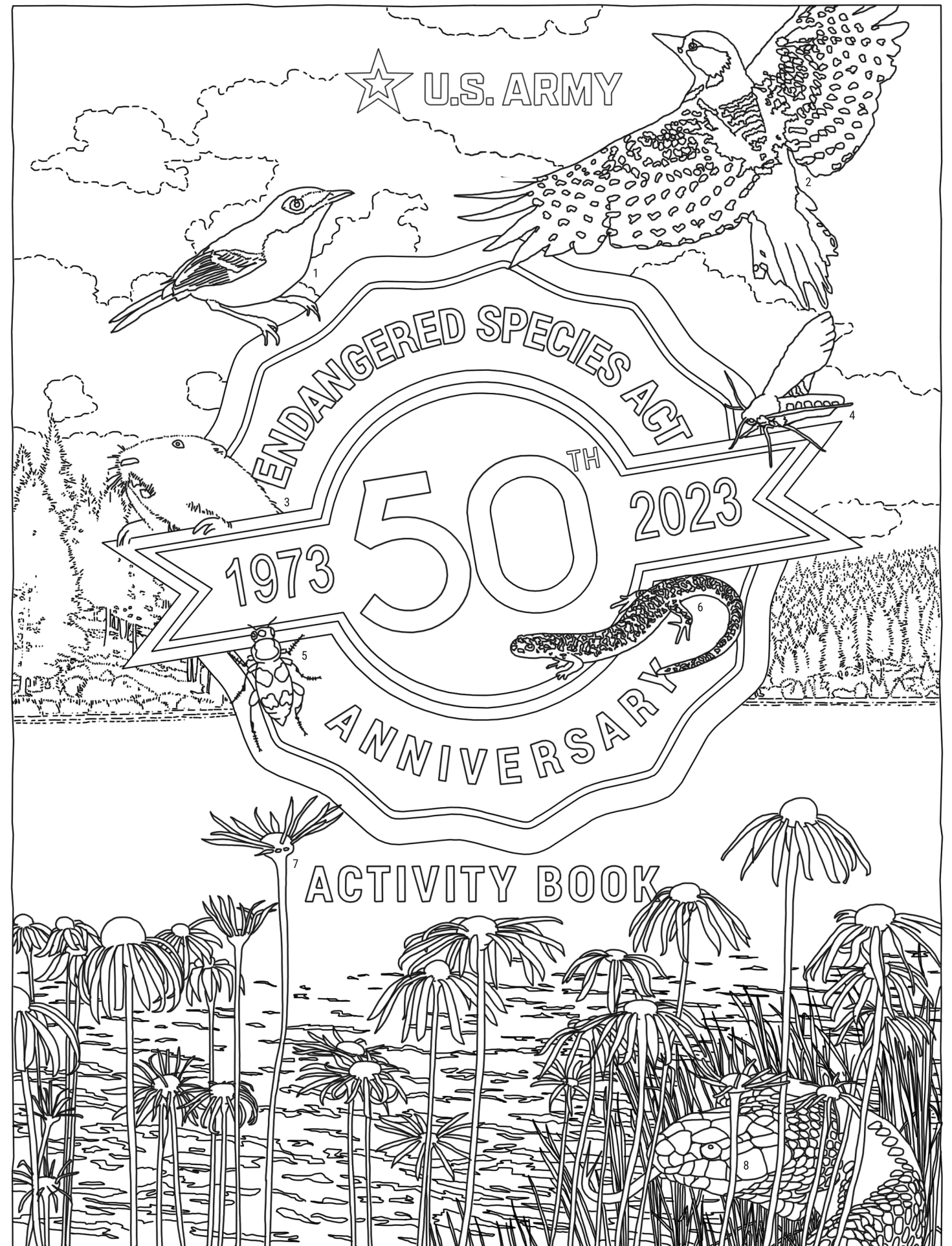
CONNECT THE DOTS



PIPING PLOVER

ANSWERS FROM FRONT COVER

- 1. BLACK-CAPPED VIREO 2. RED-COCKADED WOODPECKER
- 3. ROY PRAIRIE POCKET GOPHER 4. BLACKBURN'S SPHINX MOTH
- 5. AMERICAN BURYING BEETLE 6. FROSTED FLATWOODS SALAMANDER
- 7. SMOOTH CONEFLOWER 8. EASTERN INDIGO SNAKE



ACTIVITY BOOK

WORD SEARCH

W R O Y P R A I R I E P O C K E T G O P H E R L R C T E I O U
 J R O C E M W I X P U K A R N E R B L U E B U T T E R F L Y C
 E M B A N W P D U B A Q B Z X P R M R U B E S U E M N R O X E
 U B B L A C K C A P P E D V I R E O U C H W T U W O Q M I S A
 O V R I D U B P W C G I O A M V I S T N Y D Y E Q N I C O M B
 M E W F Q V E U X P R G I X N R P A M C Y R P I X T W M D O E
 B F R O S T E D F L A T W O O D S S A L A M A N D E R U W N E
 U R B R E E F L O B W L Q C U X I S K Z I R T U T R N W O X P
 B T U N E O C A M L C P Q D D K Y R N C A U C N E E G B W P C
 A O R I W C M S P A E N Y F M Q B R Q V X I H J R Y C U E H A
 J O C A C U R P Q C G F Y E N X E I O A S Y E E V S G O Z H E
 B I A R E M V U Q K F O B O F L E H C N E U D V P P N R X E I
 O A M E R I C A N B U R Y I N G B E E T L E B S M I U V N E R
 Y V M D I C P Q N U L E R B C M E O X I E B U I C N B O E H C
 M E J L P Q K C U R O A V R U Q Y C E O P V M R H E B S S S P
 U B O E X O W M Q N P J G U V I O S A C K E B P X F G Y I R E
 I E M G O S P N W S F U A M C T A I O X N R L R E L M G O S B
 T V I G M E B C I S J A N Z I V R O C P M E E F U O A O T U P
 E V O E W C N V T P I P I N G P L O V E R D B B E W I C R F T
 O C M D E H L Q F H H B N O C A Z C I R M P E D L E J G O M R
 P C M F U I J F L I H F Y I F U H A J C N R E T Y R B D T F H
 T U V R S N W O M N O R T H E R N L O N G E A R E D B A T G I
 W O C O R O B N P X K F I Q M G I B U C N Z P E I T N V R I C
 I K R G C O N E U M C O W P X U R Q M V N H U W E O I V E U R
 N T O C M K O W F O R Y V M A I W O D P Q N T U C N R U S G U
 M R U V N S M O O T H C O N E F L O W E R F M R U W E R E F M
 I V M R I A D V I H L C J O Z Q V I B N M T O C K I U I D G O
 H R U 7 V L E K E R E D C O C K A D E D W O O D P E C K E R E
 B O R K E M D P V K R U D S L A N G Y E N E Y C B E I S W Y R
 K J E F V O W U W E I F U G B N O W E F I U G H N W E I E R R
 S O R N R N X K W P B N T Y D J E N H U A L X J R Y Q A I V N

FIND ME!

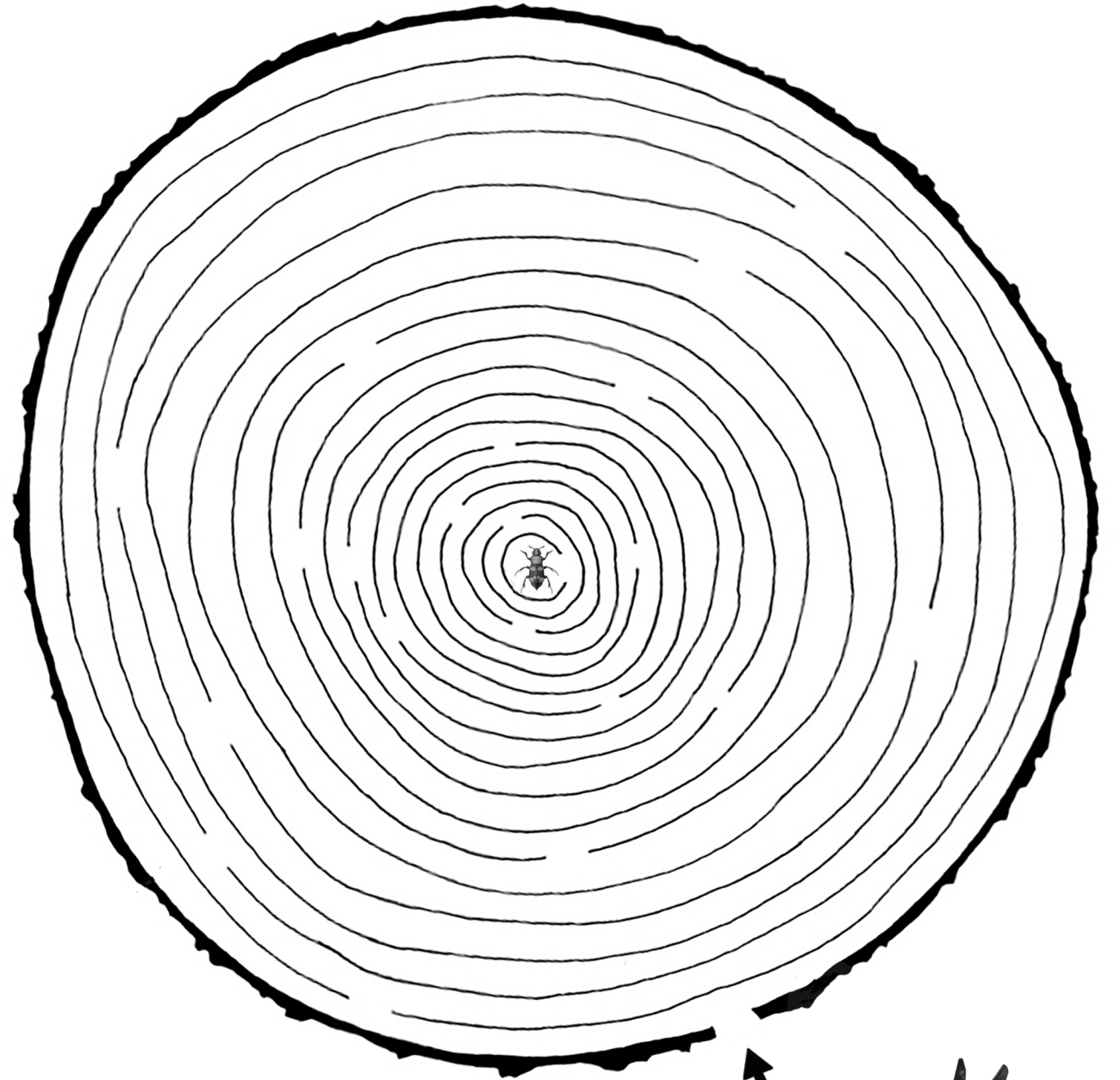
- | | |
|---------------------------|------------------------------|
| ROY PRAIRIE POCKET GOPHER | RUSTY-PATCHED BUMBLEBEE |
| RED-COCKADED WOODPECKER | BLACKBURN'S SPHINX MOTH |
| DESERT TORTOISE | CHINOOK SALMON |
| BLACK-CAPPED VIREO | FROSTED FLATWOODS SALAMANDER |
| KARNER BLUE BUTTERFLY | PIPING PLOVER |
| NORTHERN LONG-EARED BAT | MONTEREY SPINEFLOWER |
| EASTERN INDIGO SNAKE | AMERICAN BURYING BEETLE |
| SMOOTH CONEFLOWER | CALIFORNIA RED LEGGED FROG |

FROSTED FLATWOODS SALAMANDER



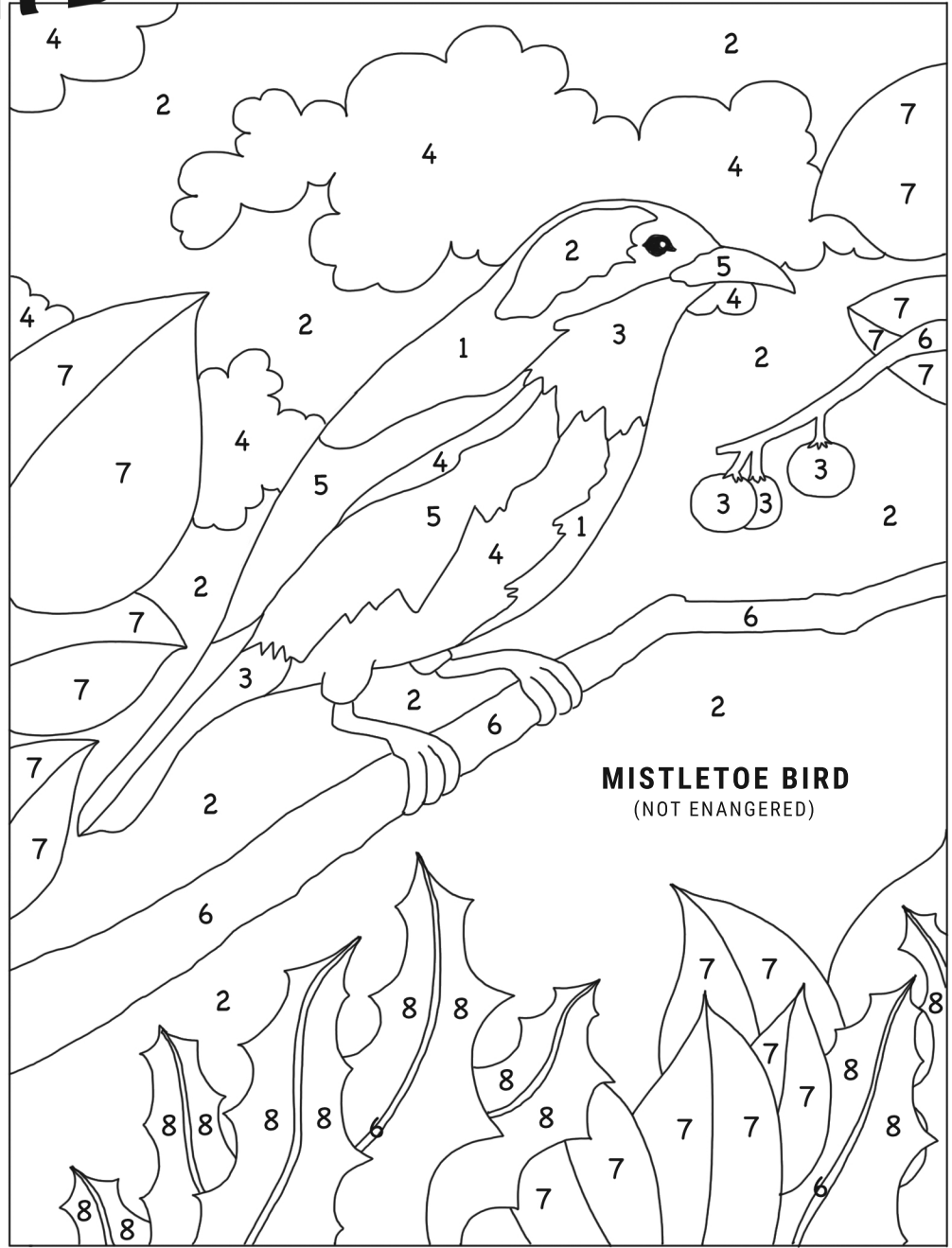
SOLVE THE MAZE

HELP THE WOODPECKER REACH THE BEETLE!



RED-COCKADED WOODPECKER

COLOR BY NUMBERS



MISTLETOE BIRD
(NOT ENANGERED)

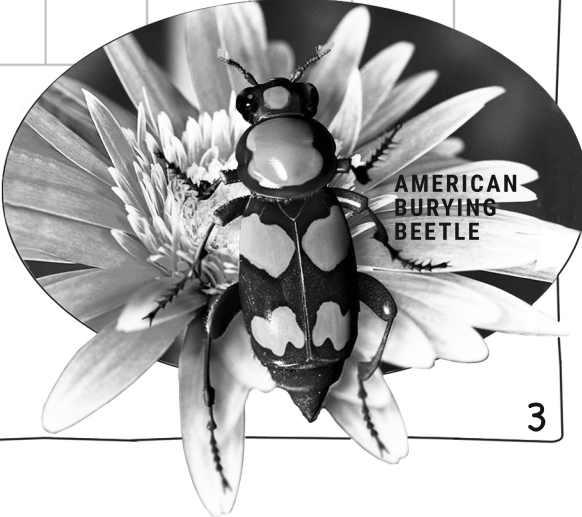
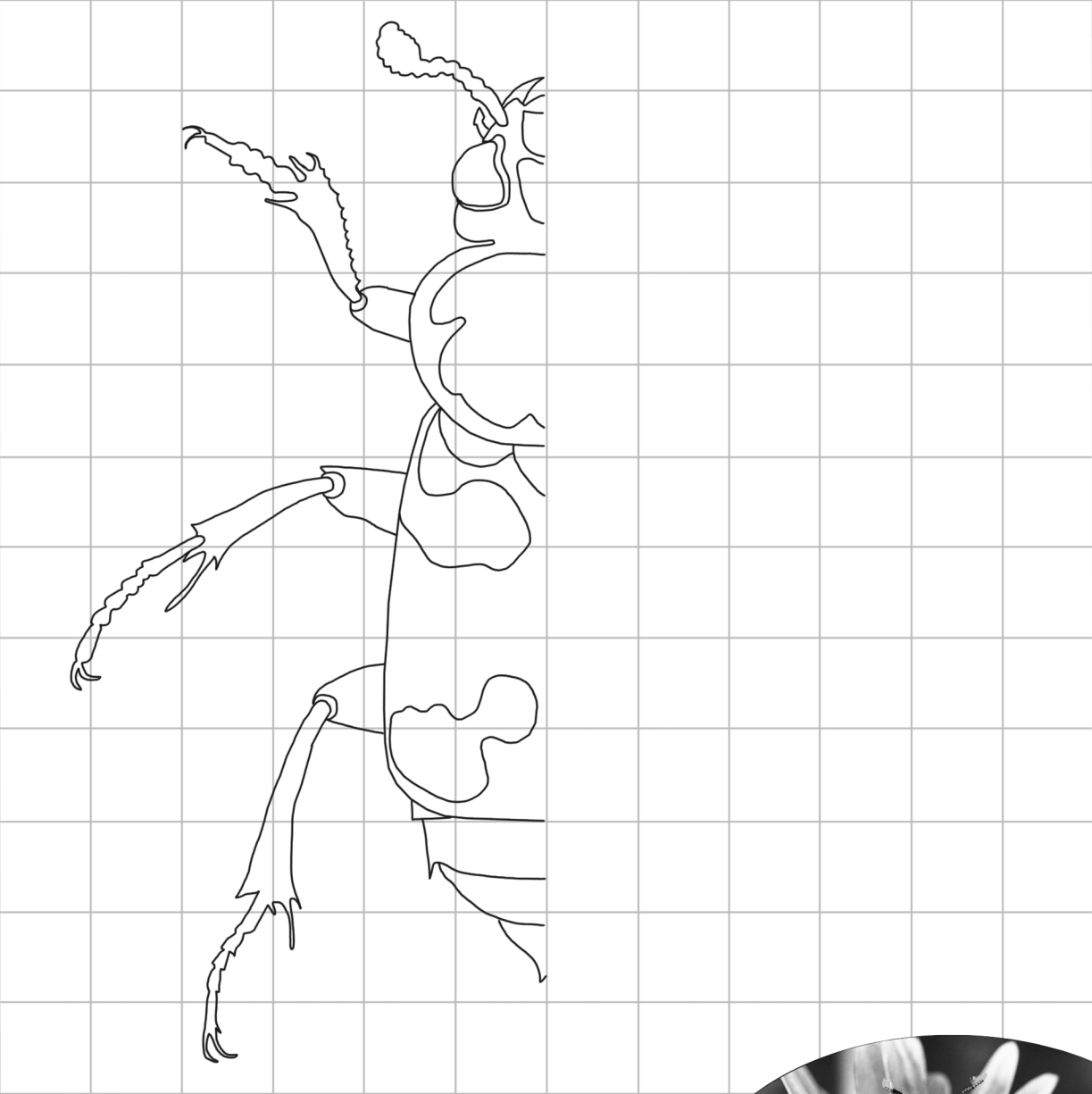
COLOR CODE

- 1 = BLACK
- 2 = BLUE
- 3 = RED
- 4 = WHITE
- 5 = GRAY
- 6 = BROWN
- 7 = GREEN
- 8 = DARK GREEN



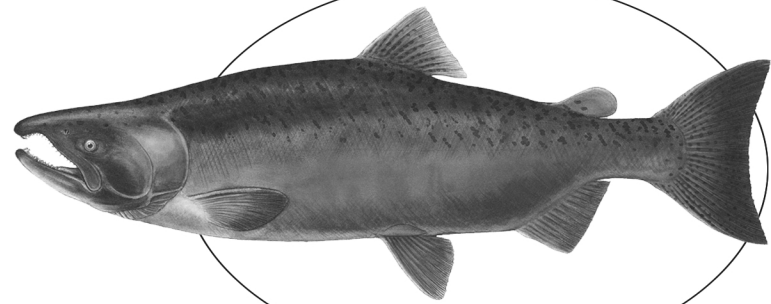
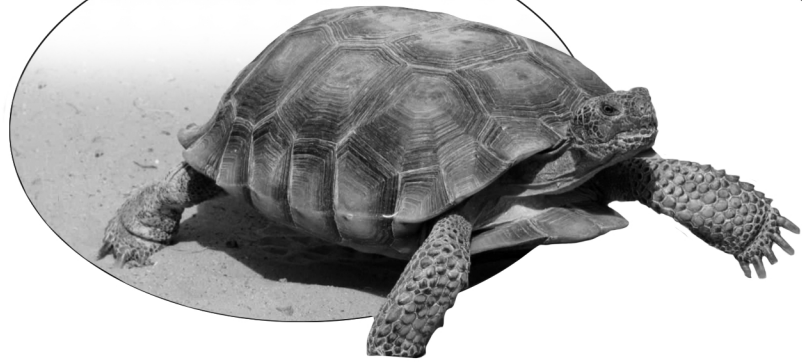
LEARN TO DRAW THE BEETLE

COMPLETE THE BEETLE ON THE RIGHT SIDE
DUPLICATING WHAT YOU SEE!



ENDANGERED SPECIES

DESERT TORTOISE



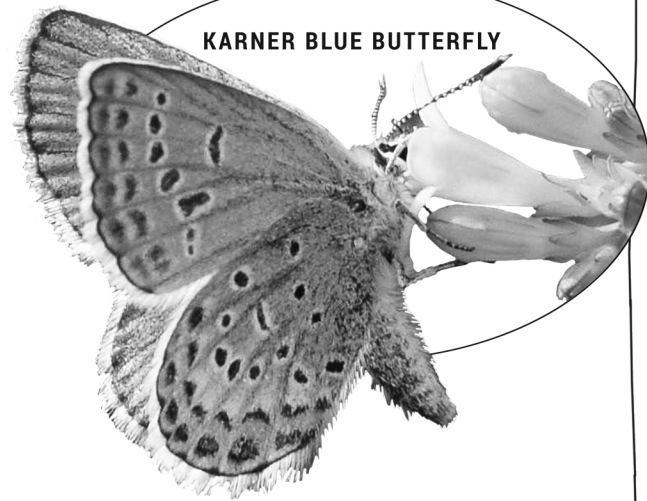
CHINOOK SALMON



NORTHERN
LONG-EARED
BAT



SMOOTH
CONEFLOWER



KARNER BLUE BUTTERFLY

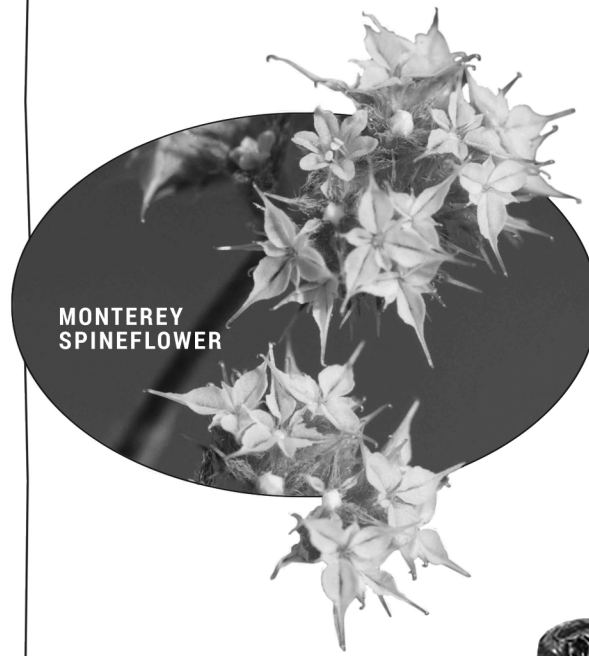
ROY PRAIRIE POCKET GOPHER



RUSTY PATCHED BUMBLE BEE



MONTEREY
SPINEFLOWER



EASTERN INDIGO SNAKE



CALIFORNIA
RED LEGGED
FROG



BLACKBURN'S SPHINX MOTH

