

A B Y T I C I R T C E L E T J
 L J U A G H N S A L M N D N N
 Z O K L D P O C T T O O V H D
 X J U E B N C A B P U V F T S
 Q O K N J V I W N A T K V O D
 T R K E B X L W M R D Q R T M
 H T F R U H M R E T E C Z B N
 P Y I G M J U J Q J V U C R L
 Z Y T Y I E N I B R U T N X E
 O J Q K V M P S I R A L O S L
 E V R E S N O C K B K W C C C
 I D D Z U O I D G W E K M S Y
 A W W L F G B Q A O X N Y B C
 F J K P Q X Z C R E W O P F E
 L Z D P D W L M T S B K Y G R

Word Bank

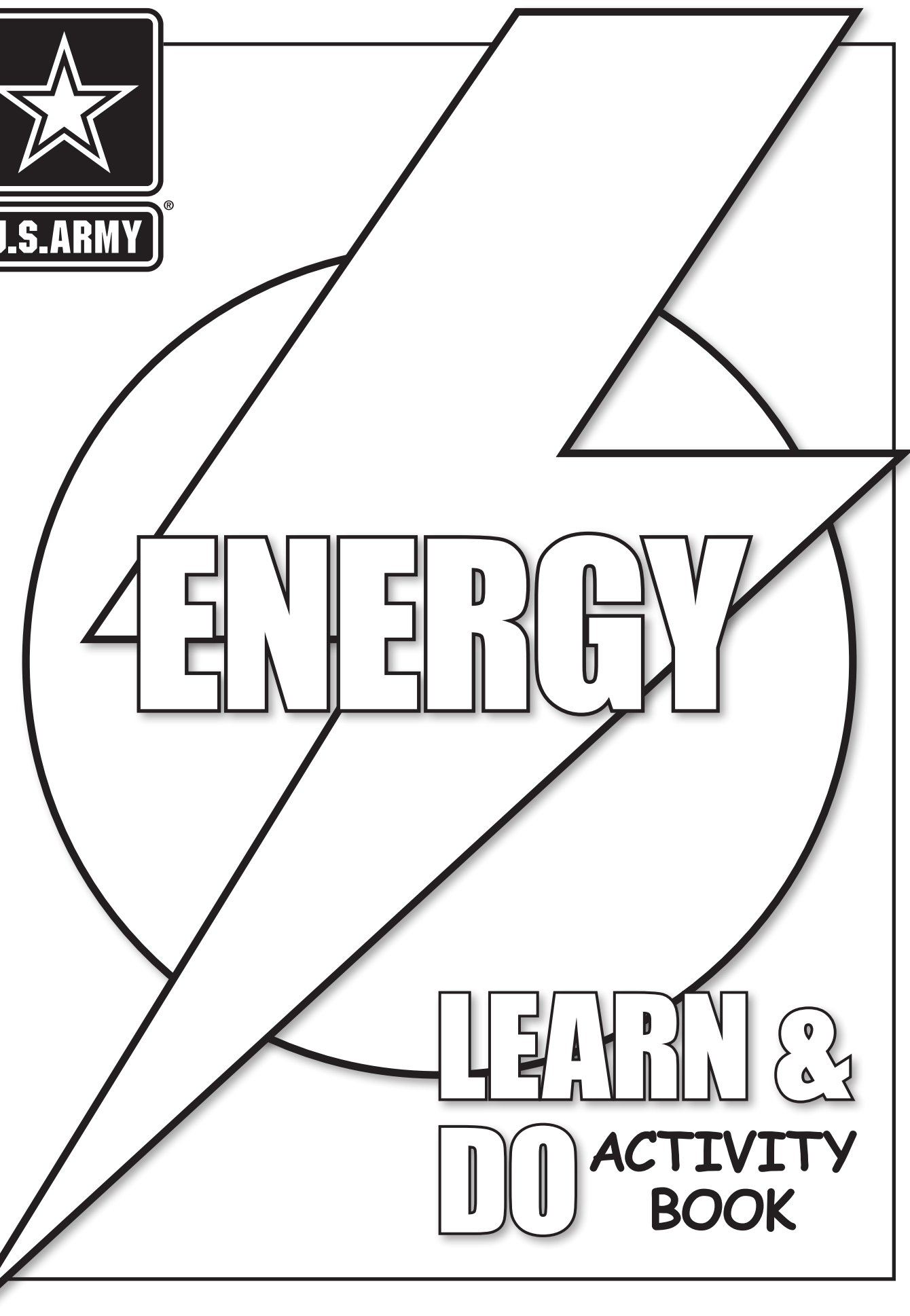
- | | | |
|------------|----------------|-------------|
| 1. turbine | 4. power | 7. wind |
| 2. recycle | 5. energy | 8. solar |
| 3. bulb | 6. electricity | 9. conserve |



Courtesy of U.S. Army Environmental Command: <https://aec.army.mil>



U.S. ARMY



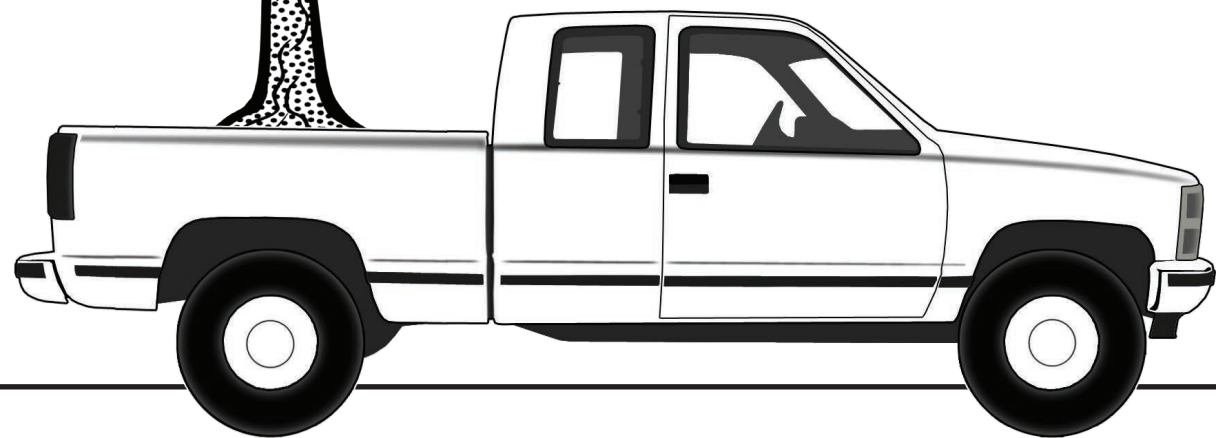
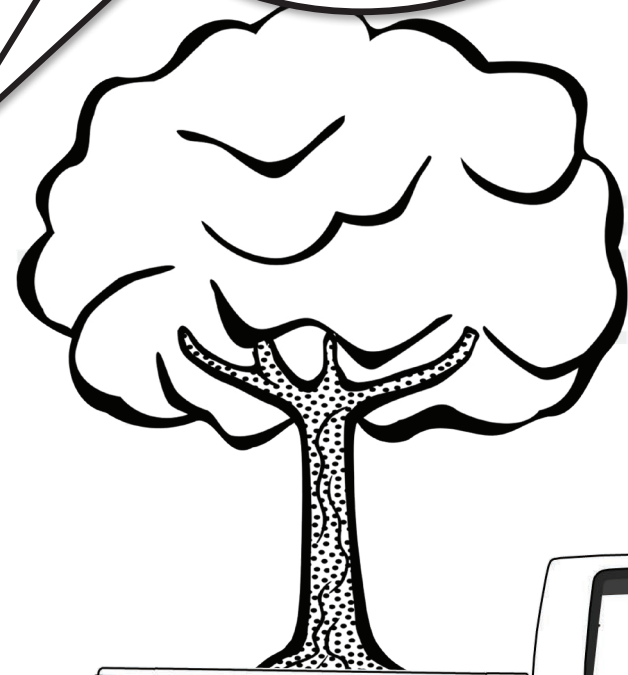
**LEARN &
DO ACTIVITY
BOOK**



ENERGY

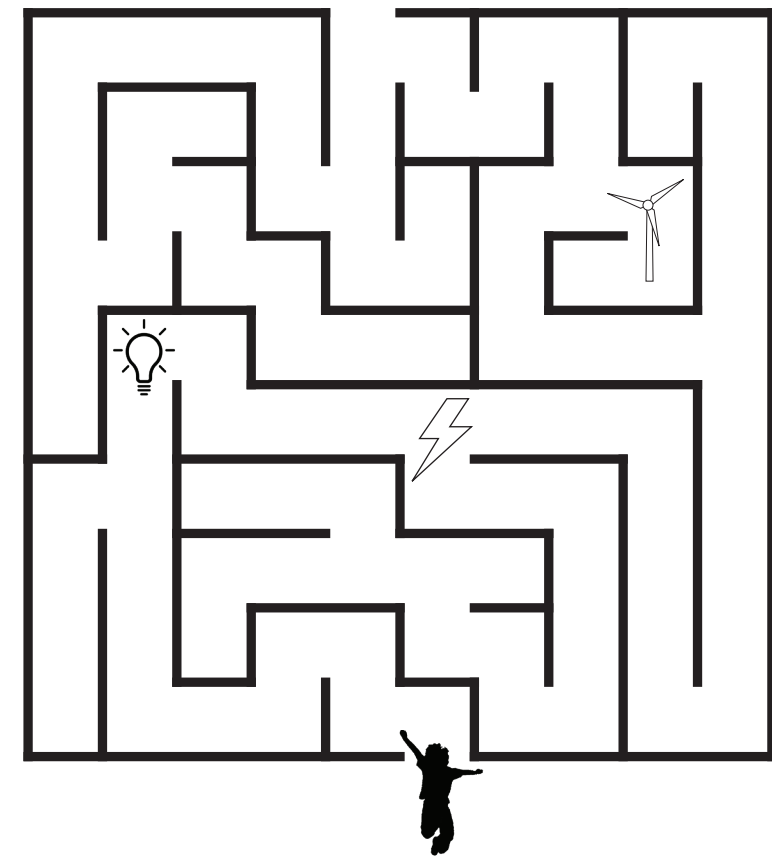
ENERGY

is another word for POWER. Energy makes things like cars and trucks move. It makes machines work. Energy also makes living things grow.



WHAT CAN I DO?

Close the door. Remember to close the door behind you whenever you come inside. This will keep the weather outside where it belongs while keeping the temperature inside nice and comfortable.

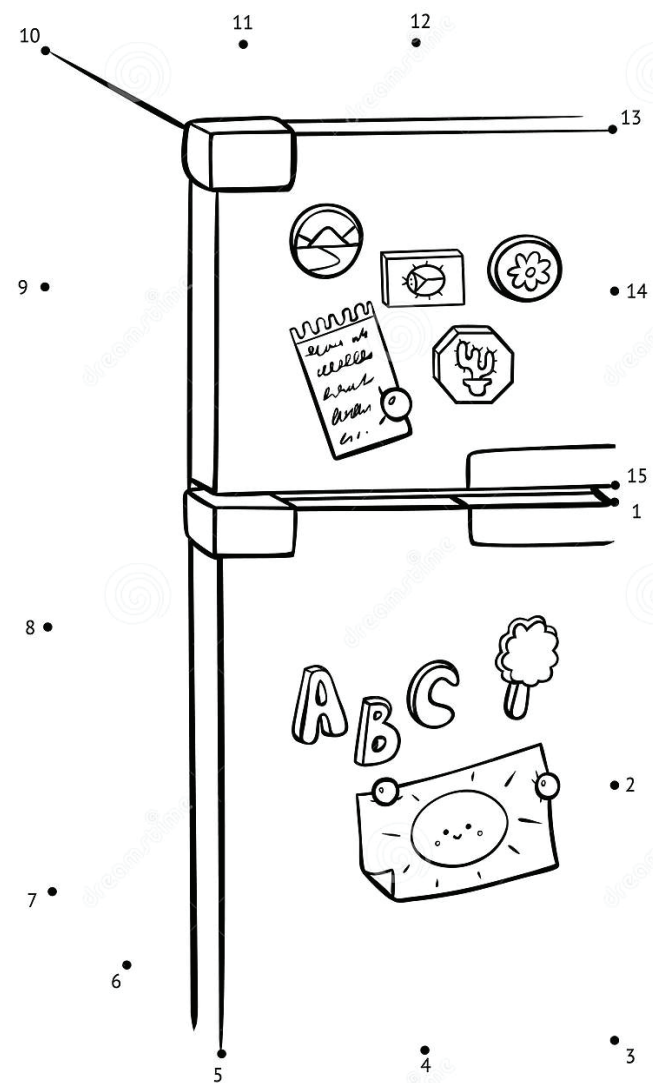


Recycle. Recycling not only helps the environment, but it also saves energy. Making new products from recycled materials requires 30% less energy than making new things from materials that were not recycled.

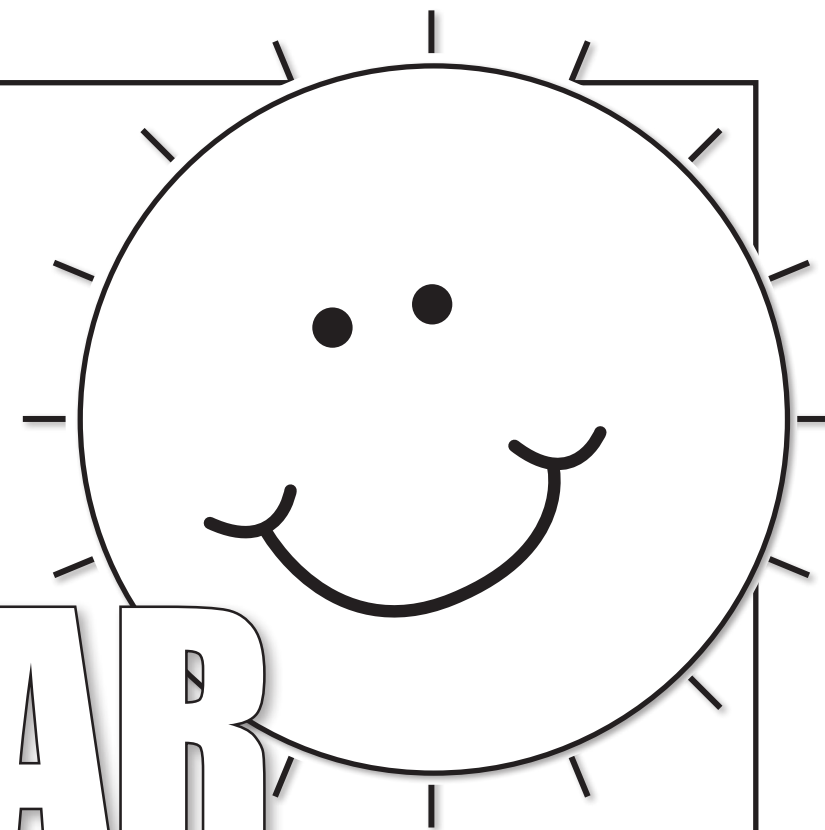
WHAT CAN I DO?

Limit your trips to the refrigerator. Every time you open the refrigerator door, cold air rushes out. Energy is needed to keep the refrigerator cold.

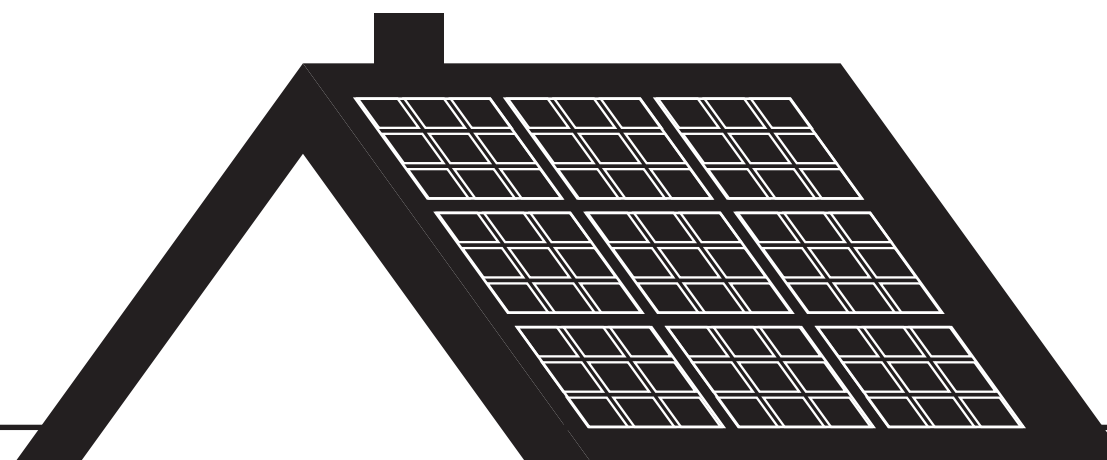
Not only will limiting your trips to the refrigerator save energy, but it helps keep everything cold and fresh!



SOLAR POWER

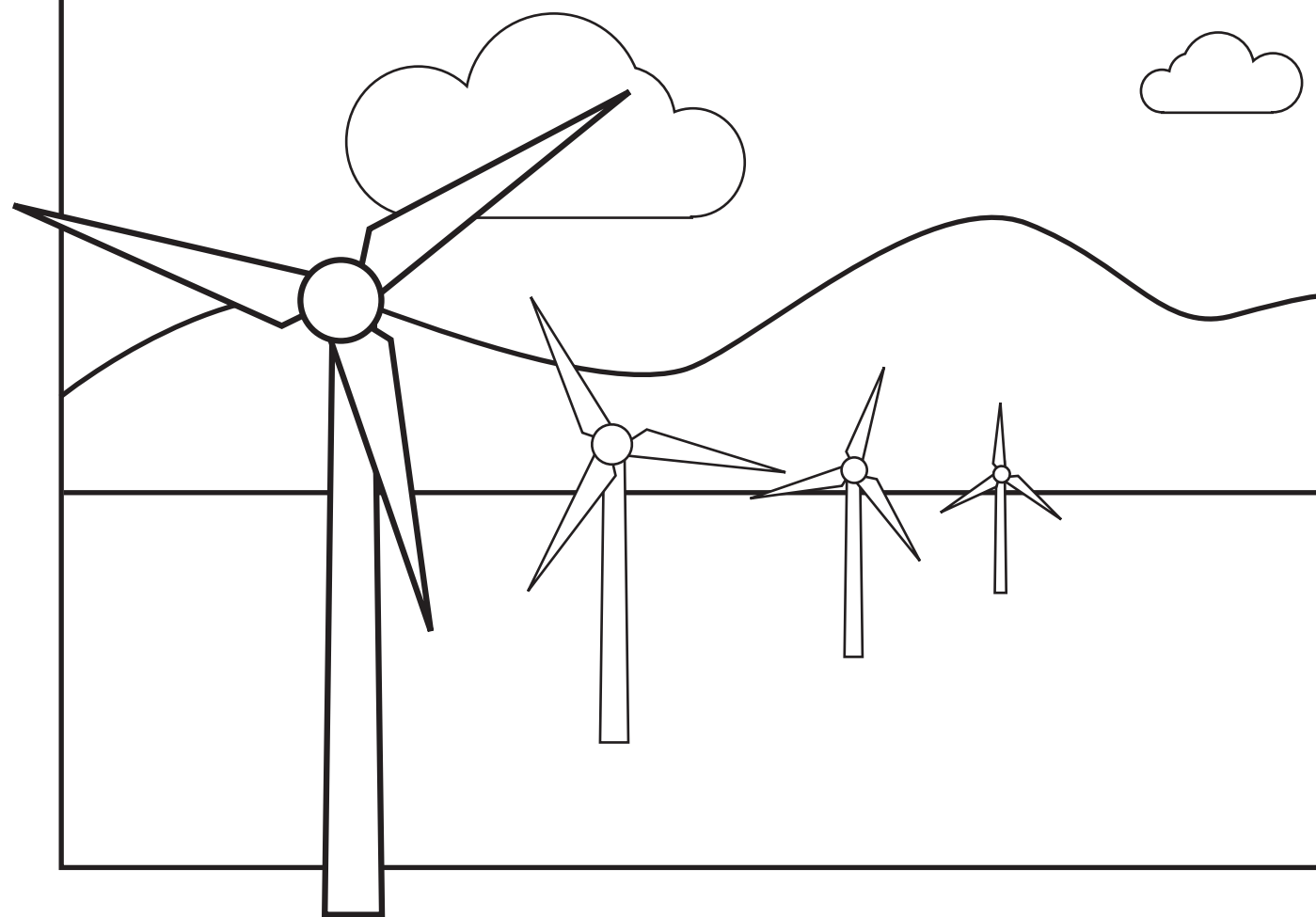


Solar power is power generated directly from sunlight. Solar power can be used for heat energy or converted into electric energy. When we use solar power, we don't use resources like coal or oil. This makes solar power a great renewable energy source.



WIND POWER

Wind power is harnessed by a machine called a wind turbine. Wind turbines are tall towers topped with blades. When wind makes the blades spin, they provide power to a machine called a generator, which produces electricity!



WHAT CAN I DO?

If you're not going to be in a room for a while, turn the lights off. Turning the lights off when you're not in a room saves energy and money.

