

# **SITE INSPECTION REPORT FOR PER- AND POLYFLUOROALKYL SUBSTANCES AT FORMER FORT CHAFFEE, ARKANSAS**

*Prepared for:*



**ODCS, G-9, ISE BRAC**

**Final  
January 2024**

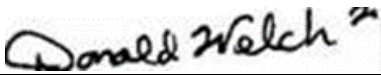
**SITE INSPECTION REPORT FOR PER- AND  
POLYFLUOROALKYL SUBSTANCES AT  
FORMER FORT CHAFFEE, ARKANSAS**

**Final**

*Prepared for:*  
**ODCS, G-9, ISE BRAC  
600 Army Pentagon  
Washington, DC 20310**

  
Kaleb Brumbaugh  
AAR – Project Manager

*Prepared by:*  
**ARS Aleut Remediation  
663 Emory Valley Rd  
Oak Ridge, TN 37830**

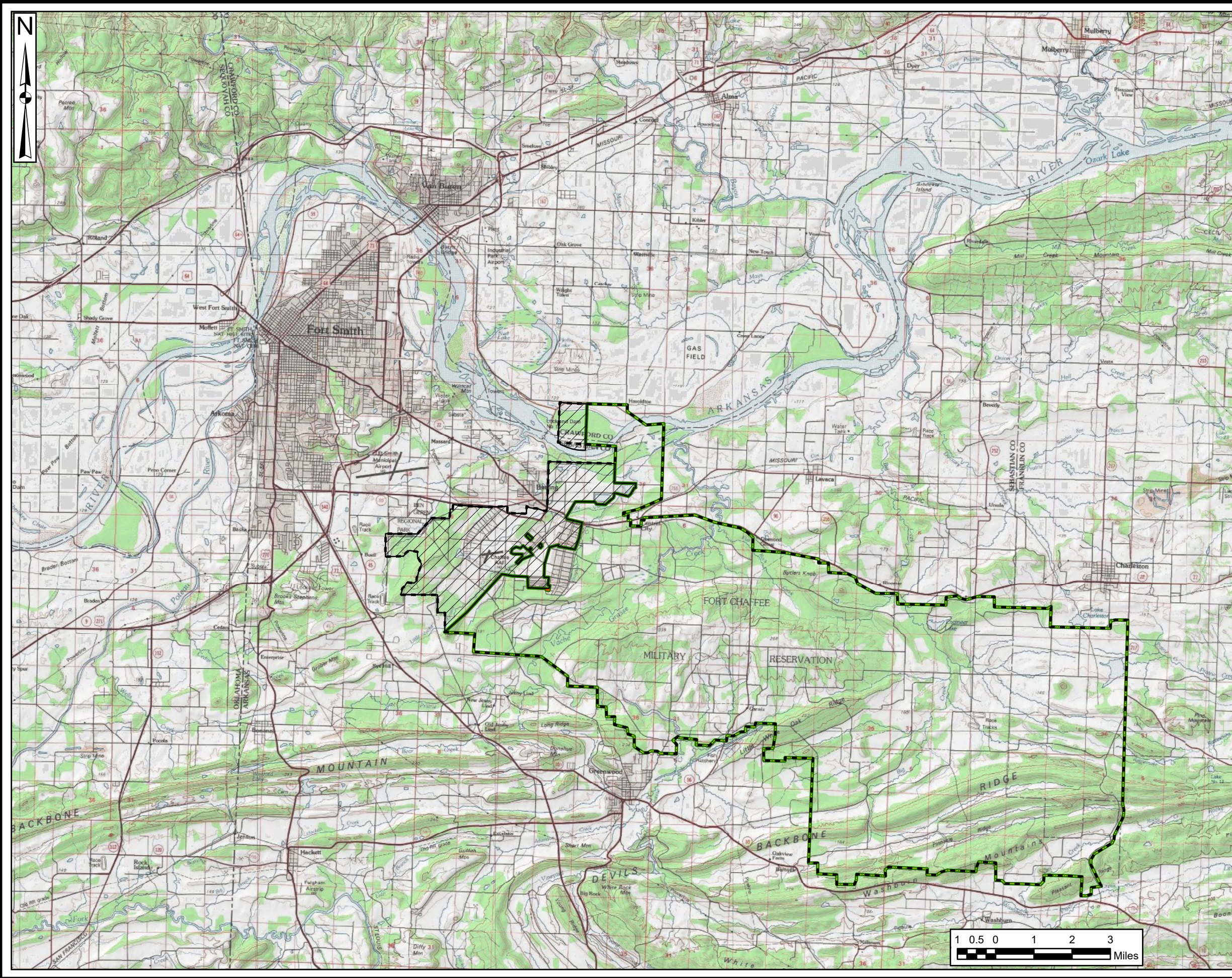
  
Don Welch  
AAR – Corporate Quality Manager

  
Blake Smotherman  
AAR – Deputy Director – Environmental Services Group

**Contract Number W912BV20D0037  
Delivery Order Number  
W912BV21F0060**

**January 2024**

## **FIGURES**



- Legend**
- Fort Chaffee Joint Maneuver Training Center - Transferred to the Arkansas Army National Guard (ARARNG)
  - BRAC Surplus Property
  - Historical Fort Chaffee
  - Installation Boundary
  - Area Transferred to the United States Department of Energy

**Abbreviations:**  
BRAC = Base Realignment and Closure

**Notes:**  
Monitoring wells (MW) are those identified in historical documents available for review and are not a complete list of the MW which existed or currently remain in the area.

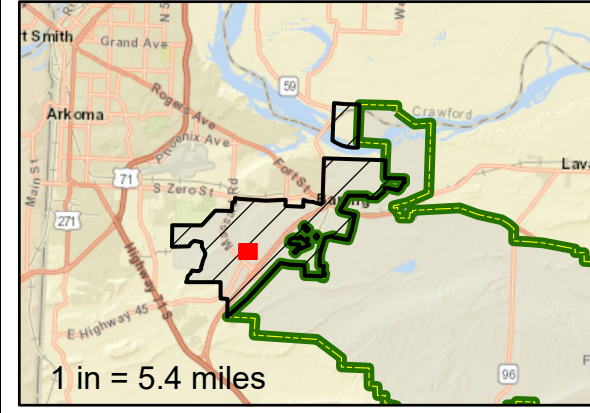
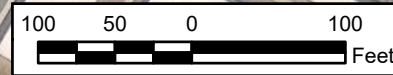
**Data Sources:**  
USGS, NHD Data, 2022  
ESRI ArcGIS Online, Aerial Imagery

**Coordinate System:**  
WGS 1984, UTM Zone 15 North

**Site Inspections (SI)  
of Per- and Polyfluoroalkyl  
Substances (PFAS)**  
Location: Fort Chaffee, Arkansas

**Figure 2-1:  
Site Features**

Drawn By: K RESTER	M. FLETCHER
-----------------------	-------------



**Legend**

- Fort Chaffee Joint Maneuver Training Center - Transferred to the Arkansas Army National Guard (ARARNG)
- BRAC Surplus Property
- AOPi
- Site Feature
- Groundwater (DPT)
- Groundwater / Surface Soil (DPT)
- Surface Water / Soil (Background Check)
- Surface Water Flow Direction
- Groundwater Flow Direction (Regional)
- Assumed Groundwater Flow Direction (Local)

Abbreviations:  
 AOPi = area of potential interest  
 Bldg = building  
 BRAC = Base Realignment and Closure  
 DPT = direct-push technology

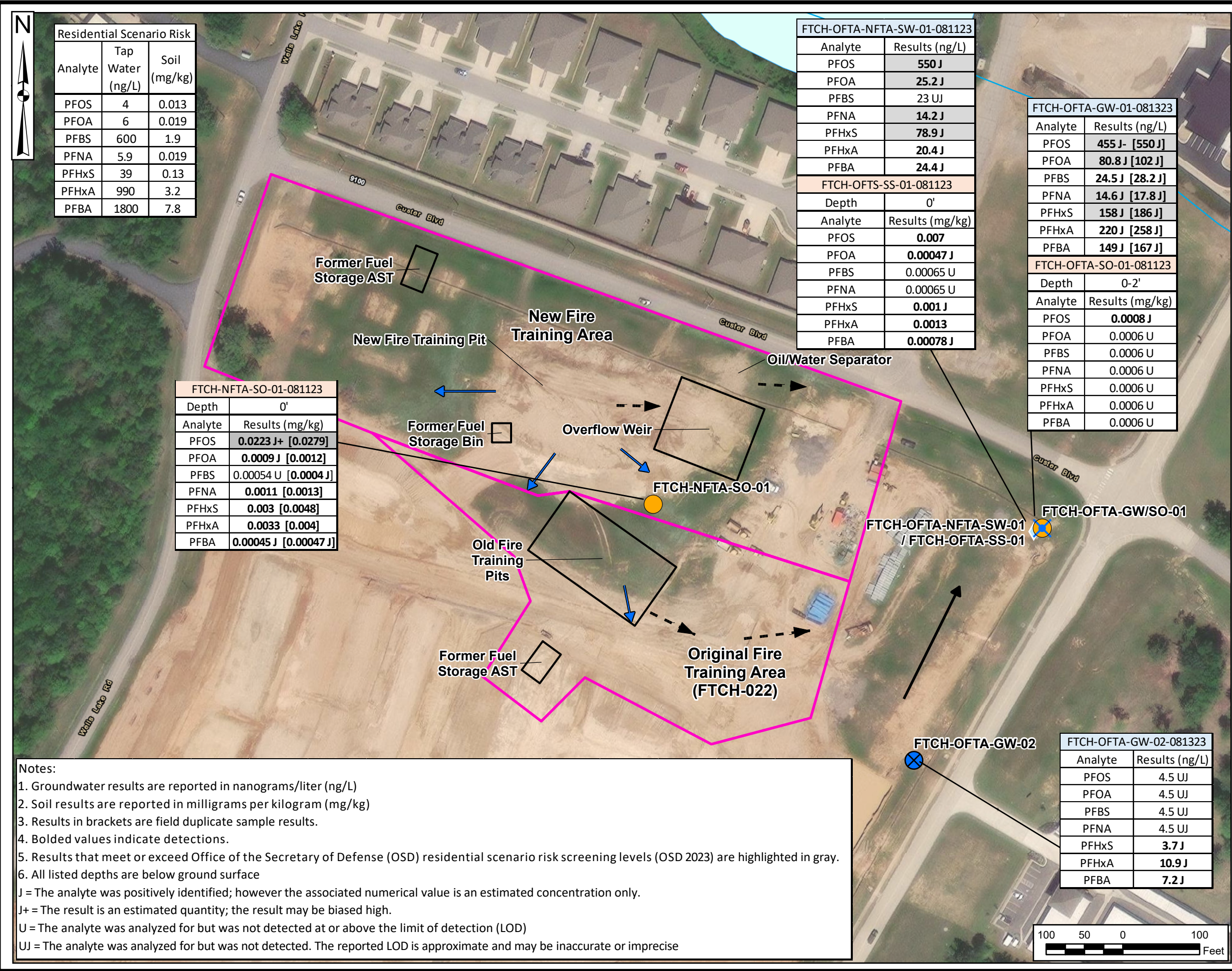
Data Sources:  
 USGS, NHD Data, 2022  
 ESRI ArcGIS Online, Aerial Imagery

Coordinate System:  
 WGS 1984, UTM Zone 15 North

**Site Inspections (SI)  
 of Per- and Polyfluoroalkyl  
 Substances  
 (PFAS)**  
 Location: Fort Chaffee, Arkansas

**Figure 6-1: Original Fire Training Area  
 (FTCH-022) and New Fire Training Area  
 Sample Locations**


Drawn By: K RESTER	PM: M. FLETCHER
-----------------------	--------------------

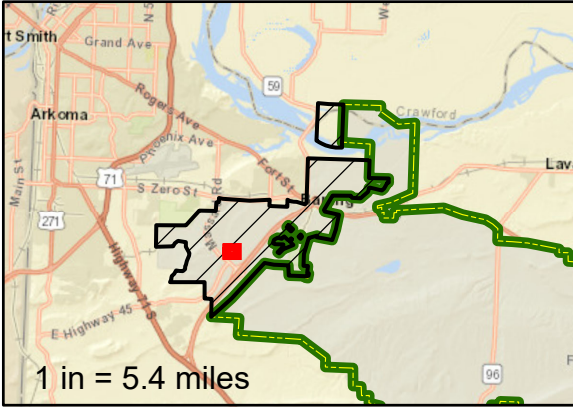


**Notes:**

- Groundwater results are reported in nanograms/liter (ng/L)
- Soil results are reported in milligrams per kilogram (mg/kg)
- Results in brackets are field duplicate sample results.
- Bolded values indicate detections.
- Results that meet or exceed Office of the Secretary of Defense (OSD) residential scenario risk screening levels (OSD 2023) are highlighted in gray.
- All listed depths are below ground surface

J = The analyte was positively identified; however the associated numerical value is an estimated concentration only.  
 J+ = The result is an estimated quantity; the result may be biased high.  
 U = The analyte was analyzed for but was not detected at or above the limit of detection (LOD)  
 UJ = The analyte was analyzed for but was not detected. The reported LOD is approximate and may be inaccurate or imprecise





1 in = 5.4 miles

**Legend**

- Fort Chaffee Joint Maneuver Training Center - Transferred to the Arkansas Army National Guard (ARANG)
- BRAC Surplus Property
- AOPI
- Site Feature
- ⊗ Groundwater (DPT)
- ⊕ Groundwater / Surface Soil (DPT)
- ♦ Surface Water / Sediment
- ➔ Surface Water Flow Direction
- ➔ Groundwater Flow Direction (Regional)
- - ➔ Assumed Groundwater Flow Direction (Local)

**Abbreviations:**  
 AOPI = area of potential interest  
 Bldg = building  
 BRAC = Base Realignment and Closure  
 DPT = direct-push technology  
 PFBS = perfluorobutanesulfonic acid  
 PFHxS = perfluorohexane sulfonate  
 PFNA = perfluorononanoic acid  
 PFOA = perfluorooctanoic acid  
 PFOS = perfluorooctane sulfonate

**Data Sources:**  
 USGS, NHD Data, 2022  
 ESRI ArcGIS Online, Aerial Imagery

**Coordinate System:**  
 WGS 1984, UTM Zone 15 North

**Site Inspections (SI)  
 of Per- and Polyfluoroalkyl  
 Substances  
 (PFAS)**

Location: Fort Chaffee, Arkansas

**Figure 6-2: Original Fire Training Area  
 (FTCH-022) and New Fire Training Area  
 Sample Results**

Drawn By:  
K RESTER

PM:  
M. FLETCHER