

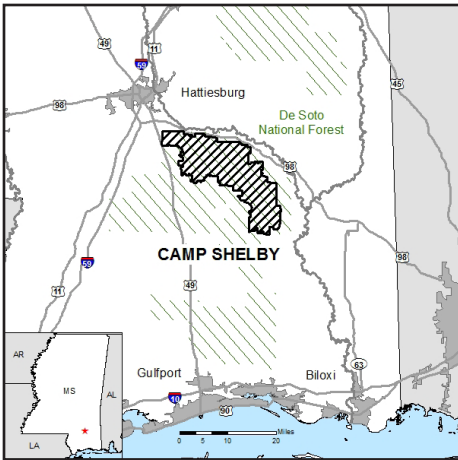


U.S. ARMY :

# CAMP SHELBY : MISSISSIPPI



**C**amp Shelby is the largest state-owned and operated field training site in the U.S. at 134,000 acres and is currently used as a mobilization center for the Reserve Component. The camp is located largely in the DeSoto National Forest, while the U.S. Forest Service manages a special use permit for military activities. Camp Shelby hosts the Joint Forces Training Center, Navy Seabee construction battalion field training exercises, and training for other Services.



Located near two highways, the city of Hattiesburg’s primary industrial park, and a municipal airport, Camp Shelby is threatened by development that would impact its readiness mission. To protect an assault landing airstrip, tank range maneuver sites, and artillery and other weapons firing ranges, the post has a unique partnership with The Nature Conservancy, the U.S. Forest Service, and the Mississippi State University

Foundation. Protecting surrounding land addresses potential conflicts with airspace, safety, noise and smoke, while supporting an important forest ecosystem.

Under the partnership to protect Camp Shelby, the U.S. Forest Service will own and manage the acquired properties as part of the DeSoto National Forest, one of the largest complexes of longleaf pine in the southeast. This habitat also supports numerous notable and rare species, such as the gopher tortoise and other flora and fauna. Together, the partnership is working as part of a broader effort across the region to preserve this imperiled ecosystem and benefit military readiness.

## BENEFIT SUMMARY

### COMMUNITY

- Protects working lands and maintains local character
- Supports coordinated planning efforts, including implementation of a Joint Land Use Study
- Protects water resources

### MILITARY

- Protects live-fire and maneuver training that produces significant amounts of noise
- Prevents workarounds that would have otherwise limited training capacity



Camp Shelby offers a variety of training, including practice medical evacuations (top) and defensive operations in a tactical environment (bottom).

## KEY PARTNERS

- Compatible Lands Foundation
- EKO Asset Management Partners
- Mississippi Department of Wildlife, Fisheries, and Parks
- Mississippi State University Foundation
- National Wild Turkey Federation
- Northern Arizona University
- The Nature Conservancy
- U.S. Department of Agriculture-Natural Resources Conservation Service
- U.S. Forest Service

## FAST FACTS THROUGH 30 SEP 2019

- » Acres preserved: **4,679**
- » Transactions conducted: **18**
- » Total funds expended: **\$12.8 million**
- » Project status: **In Progress**

## CONTACT

Public Affairs Office  
(601) 558-2827