

Badger Army Ammunition Plant Groundwater Monitoring Status

Joel Janssen
SpecPro Professional Services, LLC
608-438-1110
March 20, 2019

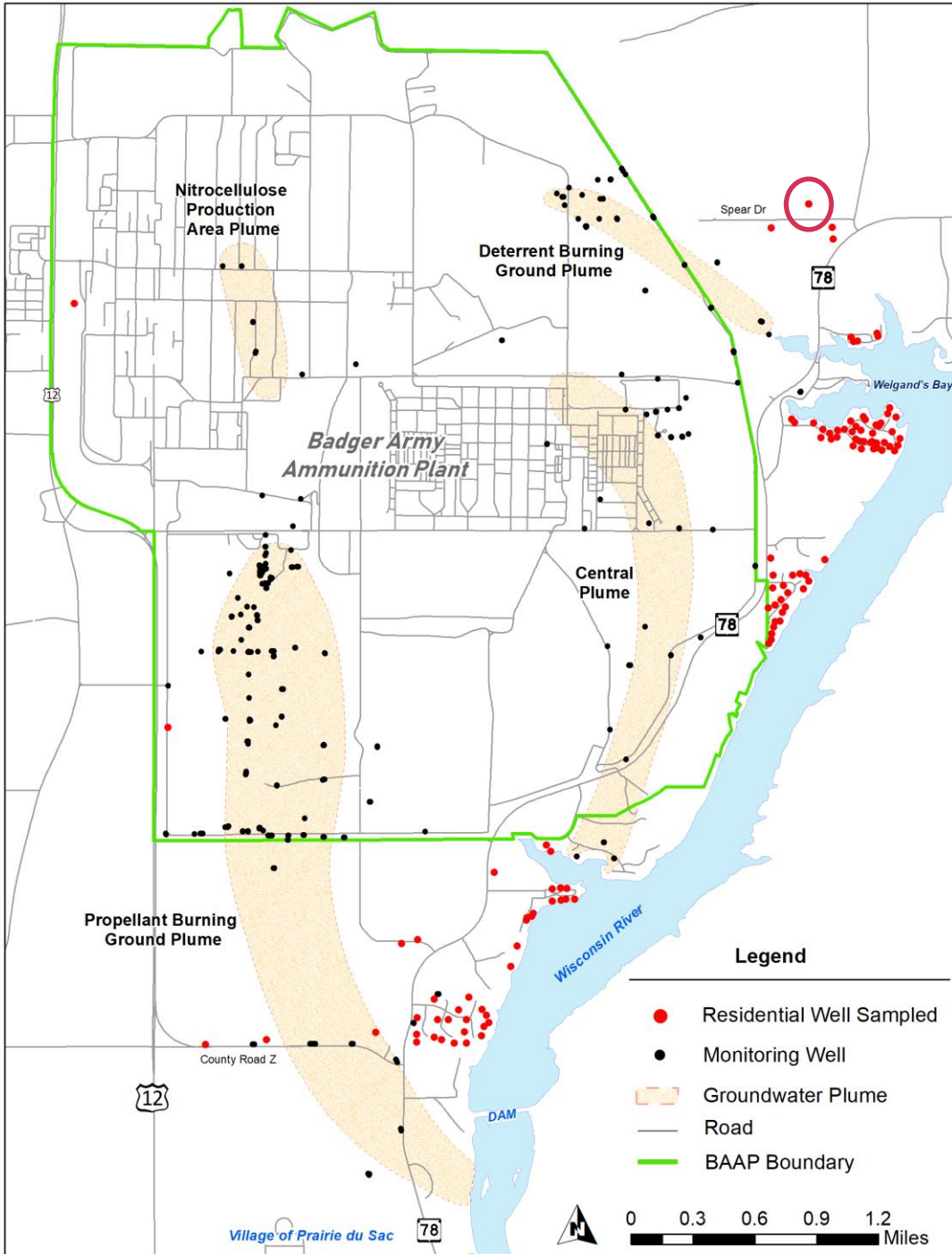
Groundwater Sampling

- **Update on residential well sampling**
- **Residential well replacement**
- **November 2018 Sampling Round**
- **April 2019 Sampling Round**

- **Four (4) plumes of groundwater contamination**
 - **Central Plume**
 - **Deterrent Burning Ground Plume**
 - **Propellant Burning Ground Plume**
 - **Nitrocellulose Production Area Plume**

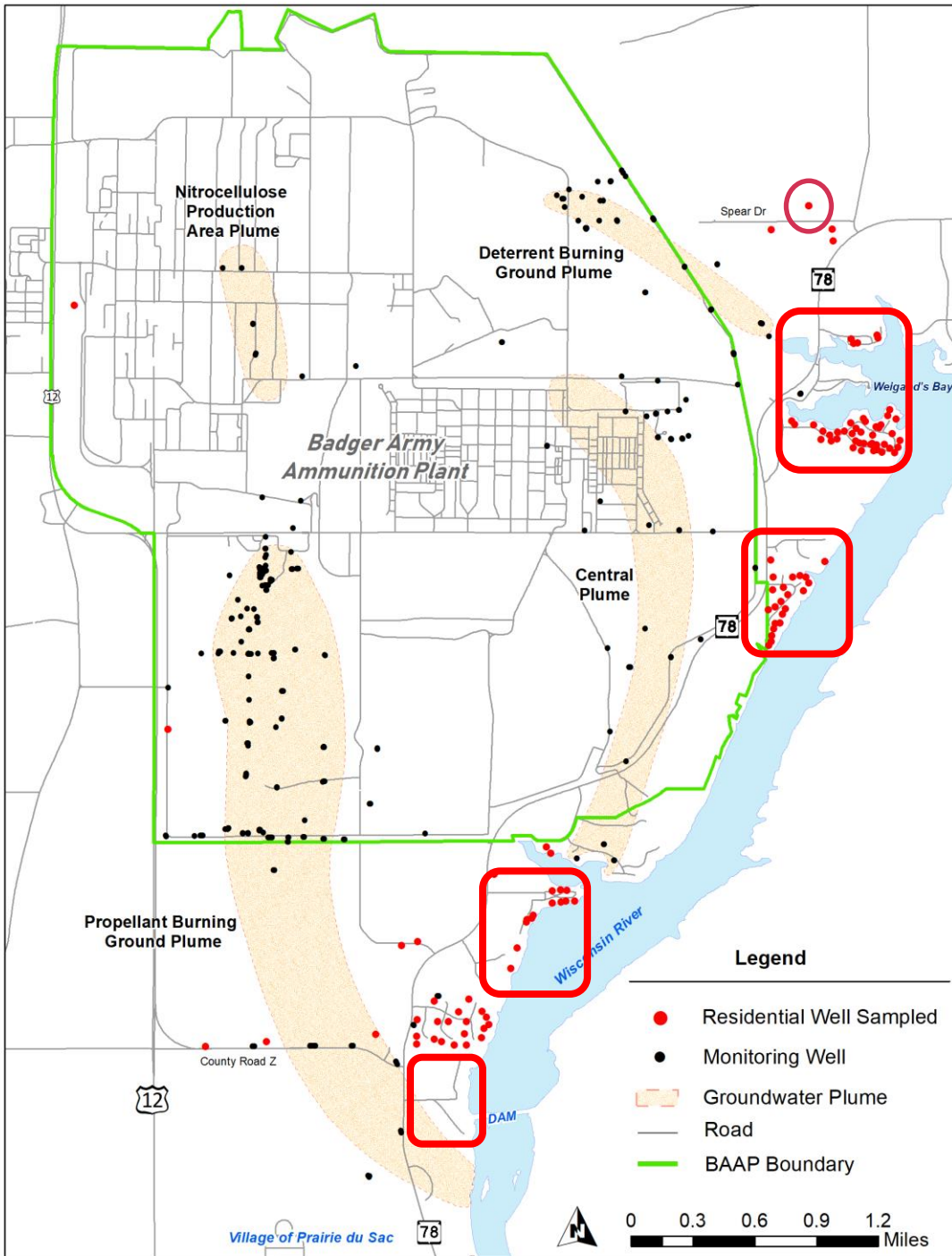
2018 Fall Residential Well Sampling

- Special sampling by Army
- 113 Residential Wells sampled October-December 2018
- 2,4-DNT above NR 140 ES (one well)
 - Clean confirmation samples
- Chloroform above NR 140 PAL (three wells)



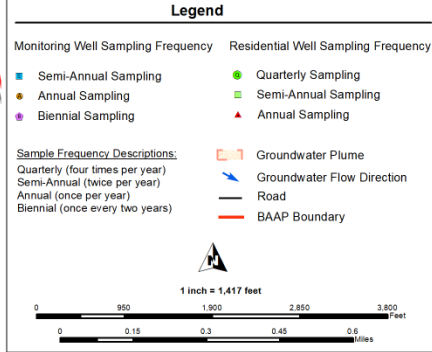
2019 Residential Well Sampling

- Special sampling by Army
- 113 Residential Wells sampled October-December 2018
 - 2,4-DNT above NR 140 ES (one well)
 - Clean confirmation samples
 - Chloroform above NR 140 PAL (three wells)
- Future sampling in 2019
 - Dam Heights
 - Gruber's Grove Bay
 - Inspiration Drive
 - Weigand's Bay

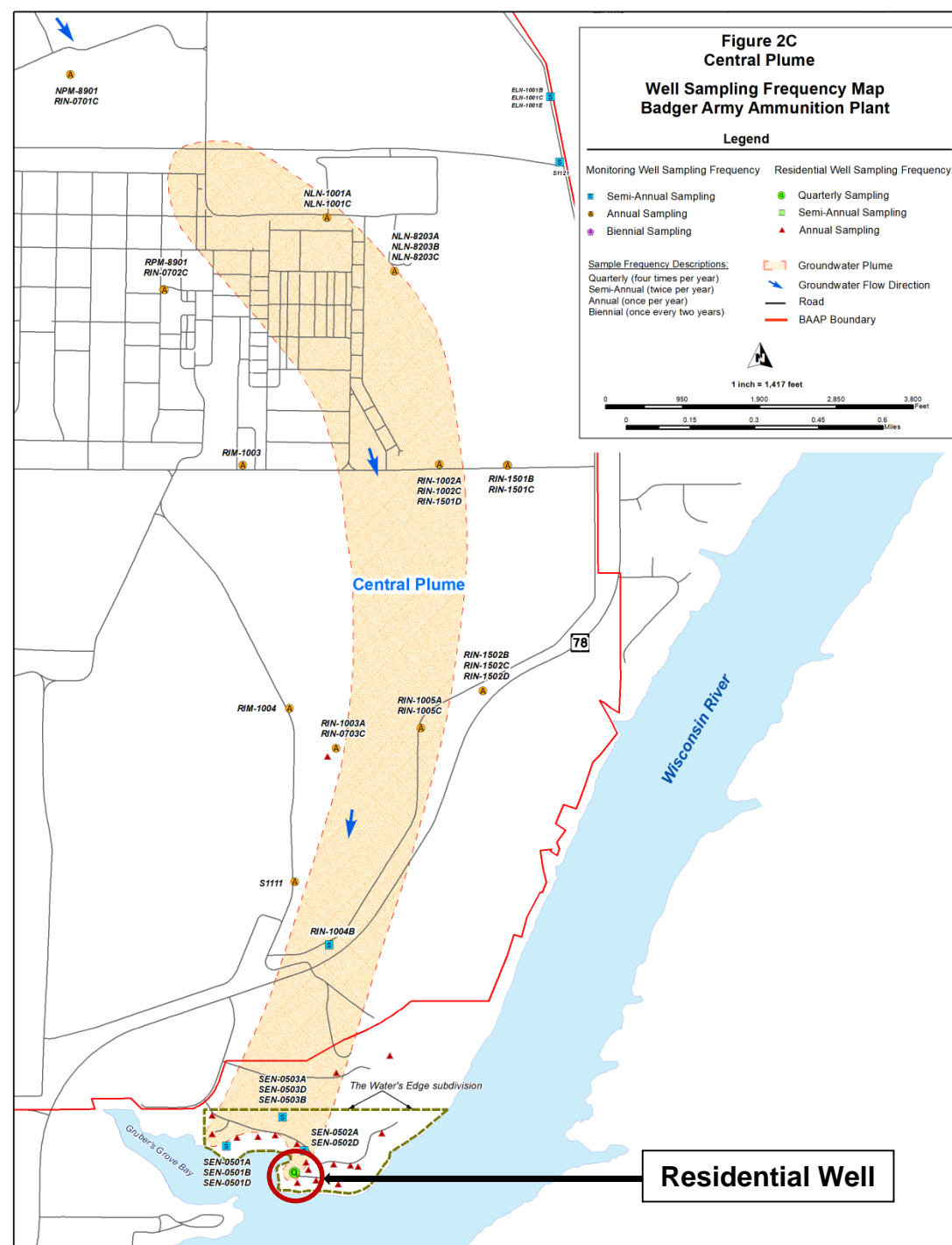


Residential Well Replacement Water's Edge Subdivision

**Figure 2C
Central Plume
Well Sampling Frequency Map
Badger Army Ammunition Plant**



- Old well was 100 feet deep (sand)
- 2,6-DNT above NR 140 ES
- Old well was abandoned
- New well constructed below groundwater plume
- 324 feet deep (bedrock)
- New well sampled – CLEAN
- Old well was abandoned
- All residential wells are sampled in Water's Edge Subdivision



Groundwater Sampling November 2018

- Central Plume
 - Nine (9) Monitoring Wells sampled
 - 2,6-DNT exceeded ES in two monitoring wells - historical
- Deterrent Burning Ground Plume
 - One (1) Residential Well sampled – NO detects
 - Five (5) Monitoring Wells sampled – Quarterly sampling
 - DNT continues to increase off-site in ELN-1003B/C
 - Army will continue monitoring the off-site area

